

Metrology Day 2023

Live Roundtable Session – May 22nd

Target audience: Anyone working with balances or in mass calibration



METTLER TOLEDO

16:00–17:30 CET

Plenary Discussion on Challenges in the Mass Calibration Lab

What are your main struggles in the mass calibration laboratory?
In this interactive session, our experienced guests will share their daily challenges related to mass calibration and discuss how they have been able to overcome them.

Key takeaways

Learn from our expert guests what challenges they face in the mass calibration lab and how they solve them and ask your own questions.

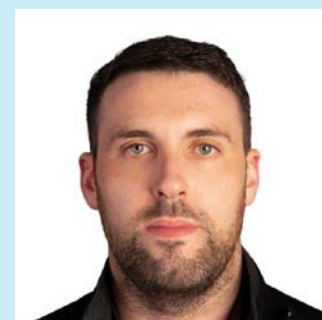
Participants



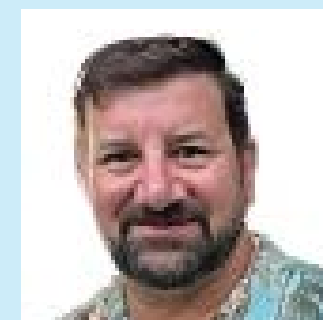
Lisa Corn
Metrology Laboratory Manager
Texas Department of Agriculture



Christian Müller-Schöll
Regulatory Affairs Specialist
METTLER TOLEDO



Greg Homan
Workshop Manager
Mason Technology Limited



Steve Armstrong
Head of Weights and Service
Troemner

Theme Metrology Day 2023:
Measurements Supporting the Global Food System



Metrology Day 2023

Trainings and Keynote Speeches – May 23rd

Target audience: Anyone working with balances or in mass calibration

METTLER TOLEDO

7:00–8:00 CET

How to Select the Right Mass Comparator

When calibrating the mass of a weight, many factors must be considered. The selection and correct use of the right calibration equipment is a crucial step toward accurate measurement results. The repeatability of the mass comparator, the calibration process, itself, and environmental metrics are paramount in the process.



Mark Kliebenschädel
Global Product Manager
METTLER TOLEDO

8:00–9:00 CET

Introduction to Weight Manufacturing

What does it take to manufacture a weight of the highest quality? In this webinar we will explain how a bar of steel is transformed into what you work with daily. Quality and testing along the journey are key, and for perfect results over the entire weighing range both modern robotic technology and experienced staff are required.

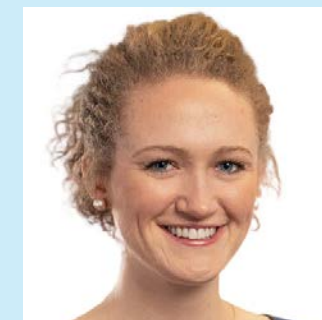


Felix Meier
Product Manager, Weights
METTLER TOLEDO

9:00–10:00 CET

Pipette Calibration According to ISO 8655

How much trust do you place in your pipetting results? In this webinar, we will explain how often you should calibrate and check your pipettes based on your process tolerances to ensure reliable results. We will also cover the basics of ISO 8655, the official standard for piston-operated volumetric apparatuses (POVA), which includes pipettes, burettes, dilutors, dispensers and manually operated precision laboratory syringes.



Holly Nurre
Global Product Manager
METTLER TOLEDO



Fabian Troll
Global Product Manager
RAININ

10:00–11:00 CET

Machine Actionable Digital Calibration Certificates in Mass Metrology

This presentation explains the necessary prerequisites and the structure of machine-actionable digital calibration certificates (DCC) in mass metrology. The focus is on developments that were elaborated under the coordination of the Physikalisch-Technische-Bundesanstalt (PTB) in collaboration with international partners. In this speech, you will learn about the structure of the certificates, the requirements for automated processes, available supporting tools, and the first industrial applications.



Dr. Frank Härtig
Vice President
Physikalisch-Technische-Bundesanstalt (PTB)

17:00–18:00 CET

State Laboratory Program Workload Survey (2022)

In this talk Van Hyder will give the metrology community a unique insight into mass calibration activities of state labs in the United States. With 50 state labs and 5 additional government laboratories participating in the survey, the presented data provides a comprehensive overview of key calibration activities, making it a great opportunity to learn more about the current US market and its challenges.



Van Hyder
Metrologist
North Carolina Department of Agriculture and Consumer Services

18:00–19:00 CET

Realizing the Definition of the Mass Unit with the METAS Kibble Balance

After a short refresher on the basic principles of the Kibble balance experiment, the concept of the METAS balance and the latest results will be discussed in detail.



Dr. Henri Baumann
Head of Sector Mechanical Quantities and Ionising Radiation
Federal Institute of Metrology METAS

Metrology Day 2023

Trainings and Keynote Speeches – May 24th

METTLER TOLEDO

Target audience: Anyone working with balances or in mass calibration

8:00–9:00 CET

KRISS Kibble Balance Development to Realize the Kilogram

After redefinition of the SI unit in 2019, the kilogram can be realized using the Kibble balance principle. In this talk, the concept and performance of KRISS KB-1 (Korea Research Institute of Standards and Science) will be introduced. Effort to improve the uncertainty in the design of KRISS KB-2 will also be discussed. KRISS has been active in Kibble balance development since 2012.



Dr. Dongmin Kim

Leader of Planck Constant Mass Team
KRISS

9:00–10:00 CET

Realizing the Definition of the Mass Unit with the METAS Kibble Balance

After a short refresher on the basic principles of the Kibble balance experiment, the concept of the METAS balance and the latest results will be discussed in detail.



Dr. Henri Baumann

Head of Sector Mechanical Quantities and Ionising Radiation
Federal Institute of Metrology METAS

17:00–18:00 CET

Introduction to Weight Manufacturing

What does it take to manufacture a weight of the highest quality? In this webinar we will explain how a bar of steel is transformed into what you work with daily. Quality and testing along the journey are key, and for perfect results over the entire weighing range both modern robotic technology and experienced staff are required.



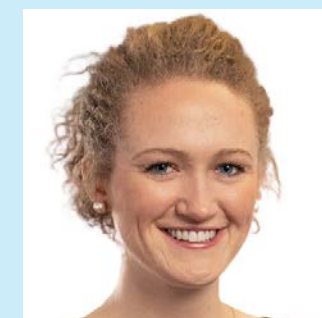
Felix Meier

Product Manager, Weights
METTLER TOLEDO

18:00–19:00 CET

Pipette Calibration According to ISO 8655

How much trust do you place in your pipetting results? In this webinar, we will explain how often you should calibrate and check your pipettes based on your process tolerances to ensure reliable results. We will also cover the basics of ISO 8655, the official standard for piston-operated volumetric apparatuses (POVA), which includes pipettes, burettes, dilutors, dispensers and manually operated precision laboratory syringes.



Holly Nurre

Global Product Manager
METTLER TOLEDO



Irene Ni

Global Service Product Manager
RAININ

19:00–20:00 CET

How to Select the Right Mass Comparator

When calibrating the mass of a weight, many factors must be considered. The selection and correct use of the right calibration equipment is a crucial step toward accurate measurement results. The repeatability of the mass comparator, the calibration process, itself, and environmental metrics are paramount in the process.



Mark Kliebenschädel

Global Product Manager
METTLER TOLEDO